




Two great campuses. Countless paths to success.



Widener Law



A man and a woman in business attire are shown in profile, looking down at a document they are holding together. The lighting is warm and focused on their faces, creating a professional and collaborative atmosphere.

Contents

- 1/ Welcome to Widener Law
- 2/ Distinctions
- 4/ Faculty
- 6/ Curriculum
- 8/ Programs
- 10/ Clinics, externships
- 12/ Professional training
- 14/ Resources and facilities
- 16/ Activities
- 18/ Career development
- 20/ Two great campuses, two great cities
- 22/ Applying
- 27/ Application form

Distinctions

Widener Law is about choices. The Delaware Campus offers the world's best starting point for careers in corporate law. The Harrisburg Campus excels in governmental law. And that is just the beginning.



The Health Law Institute at Widener Law ranks among the nation's top ten health law programs.

Since its inception in 1989, the Environmental and Natural Resources Law Clinic has successfully litigated more than 200 cases for more than 50 nonprofit environmental groups in 15 federal and state courts across the country.

The Veterans Affairs Clinic at Widener Law is one of two full-time clinical programs in the nation that assists disabled veterans with compensation cases.

More than 10,000 Widener Law alumni practice across the country.

Widener Law alumni practice in 50 states, the District of Columbia, and 25 countries and territories.



Widener Law is among the largest law schools in the mid-Atlantic region. It is the only law school in the Pennsylvania state capital and in the state of Delaware.

Widener Law is a founding institutional member of the World Conservation Union.

The Legal Information Center at Widener Law contains over 600,000 volumes, one of the region's best legal collections.

Widener Law publishes three law reviews, including the *Delaware Journal of Corporate Law*, the 23rd most cited specialty law review by federal and state courts (Washington & Lee University study, 2002).



Faculty

Widener Law's faculty includes former prosecutors, public defenders, and attorneys from all types of practice—large and small firms, government agencies, and public interest settings. They advise state and federal court systems, state legislatures, the U.S. Congress, local bar associations, and international organizations. Many faculty members are nationally and internationally known for their contributions to corporate, health, international, labor, constitutional, administrative, and environmental law.

Most important, faculty members are accessible. They convey energy, enthusiasm, and expertise in small, student-focused classes where you will debate ideas openly and refine your skills of public presentation and persuasion.



"Widener Law is more than a law school—the people here become like your family.

Your professors are always more than willing to help you, in the classroom and out. They're informative and intelligent. More than that, they are really friendly and helpful."

Alyssa Knisely, 2L, BS, Shippensburg University of Pennsylvania



"I'm glad I chose Widener Law. The education I'm receiving is transformative. In fact, it is the most intellectually stimulating undertaking of my life.

The ability to look at what most people see as 'black or white' and find the 'grey' in it is invaluable to the practice of law."

Troy Riddle, 2L, BA, Cleary College





Did you know: Professor John Dernbach returned to full-time teaching in 2005 after two years as director of the policy office at the Pennsylvania Department of Environmental Resources.

Notable: U.S. Senator Joseph R. Biden of Delaware is adjunct professor of law at Widener Law.

Fact: *The New York Times Magazine* included International Law Professor Andrew Strauss's controversial ideas on litigation and international environmental law in its 2001 "Year in Ideas" issue.

Distinctive: Special adjunct faculty at Widener Law includes Delaware Supreme Court Justices Randy J. Holland and Jack B. Jacobs. Both have taught at Widener Law for many years.

Fact: In 2002, Professor Dana Harrington Conner received the Sandra Day O'Connor Award for Professional Service from the American Inns of Court, recognizing public interest and pro bono achievement.

Notable: From 2003 to 2005, Professor Arlene Rivera Finkelstein served as president of the Hispanic Bar Association of Pennsylvania.

Overheard: "Professors' doors are always open," says Laura Jennings, 2L, BA, George Washington University, "and not just to talk about classes, but about professional and personal issues, too."

For the latest information on faculty achievements and in-depth biographies, visit www.law.widener.edu/faculty/index.shtml.



Curriculum

Foundations and choices

The Widener Law curriculum provides a solid foundation in the fundamentals of law. You may further refine your studies by selecting classes in specific areas of interest.

At Widener Law, you will take classes designed to perfect your lawyering skills, including “Legal Methods,” where you develop practical proficiency in legal writing, research, and analysis. No matter what you study here, you will learn to succeed as

an attorney. That is a key distinction of the Widener Law experience.

Practice makes perfect

We are committed to your success. During the fall semester of your first year, you attend classes and workshops on study and exam techniques. In the spring semester, you can join a seven-week workshop series in which you take practice exams and work with a tutor to hone your examination skills.





Students and faculty find time between classes to discuss a fine point of law.

Overheard: “People from the American Bar Association have called us ‘the best-kept secret on the East Coast,’” says Jennifer Iseman, 2L, BS, Pennsylvania State University.

Fact: Seminars have 6 to 20 students in the class. Small section classes have 30 to 40 students. Typical first-year required classes have approximately 80 students in class, and some are as small as 25.

Distinctive: In partnership with the National Judicial College, the nation’s leading judicial education and training institution, Widener Law serves as the East Coast center for judicial education programs.

Fact: Parents of school-age children or people who work nights can study part-time at Widener Law during the day.

Did you know: Taken together, Widener Law’s two campuses have more than 600 students studying part-time during day or evening sessions.

Notable: Three Delaware faculty members have served as Fulbright Scholars.

First-Year Curriculum

Delaware Campus Regular Division

	<i>Credits</i>
<i>Fall</i>	
Introduction to Law	0
Civil Procedure I	4
Legal Methods I	3
Property I	4
Torts	4
<i>Spring</i>	
Contracts	4
Criminal Law	3
Property II	2
Legal Methods II	2
Constitutional Law I	4

Extended Division

<i>Fall</i>	
Introduction to Law	0
Civil Procedure I	4
Legal Methods I	3
Torts	4
<i>Spring</i>	
Contracts	4
Property I	4
Legal Methods II	2

Harrisburg Campus Regular Division

<i>Fall</i>	
Introduction to Law	0
Contracts	3
Civil Procedure I	3
Legal Methods I	3
Property I	3
Torts I	2
<i>Spring</i>	
Contracts II	3
Civil Procedure II	3
Legal Methods II	2
Property II	3
Torts II	3

Extended Division

<i>Fall</i>	
Introduction to Law	0
Civil Procedure I	3
Contracts I	3
Legal Methods I	3
Torts I	2
<i>Spring</i>	
Contracts II	3
Civil Procedure II	3
Legal Methods II	2
Torts II	3



Programs

A degree from Widener Law can form the foundation for success. We offer a broad range of programs.

Juris Doctor (JD)

Students pursuing the JD may choose from many concentrations, including corporate, environmental, governmental, health, and public interest law.

Additional graduate programs—Delaware

Master of Laws in Corporate Law and Finance (LLM)

Master of Laws in Health Law (LLM)

Master of Jurisprudence in Health Law (MJ)

Doctor of Juridical Science (SJD)

Doctor of Laws (DL)

Dual-degree programs—Delaware

Juris Doctor/Master of Business Administration (JD/MBA)

Juris Doctor/Doctor of Psychology (JD/PsyD)

Juris Doctor/Master of Marine Policy (JD/MMP)

Dual-degree program—Harrisburg

Juris Doctor/Master of Science in Library Science (JD/MSLS)

Schedules to meet many needs

Our flexible scheduling can make the difference in advancing your career. Both campuses offer three-year, full-time programs through the Regular Division. Attractive to many working adults, the Extended Division program offers the option of attending part-time day or evening classes and finishing your degree in four years.

On our Web site: To get the latest updates on Widener Law curriculum and degree programs, visit www.law.widener.edu.

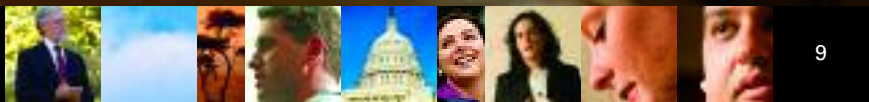
Overheard: “As a working professional, I needed a program that would allow me to earn a law degree while I was working,” says James K. Matelevich-Hoang, 3L, BA, California State University, Fresno. “The Extended Division program made it possible.”

Fact: No matter what your scheduling demands, Widener Law can help you complete your degree the way that works best for you.

Widener Law students often gather in informal study groups to explore ideas outside of the classroom.



Schedules can change. If yours does while attending Widener Law, you can transfer between divisions, switching from full- to part-time status if your job or life requires it. ABA rules prohibit full-time students from working more than 20 hours per week.



Clinics, externships

Practical paths to essential skills

Widener Law operates clinics, arranges externships and public interest legal placements, runs trial simulations and advocacy training, and much more to help you build skills you will need from day one of your legal career. Experiencing the law at work—in legislative sessions, death penalty hearings, federal cases, and the like—brings your classroom learning to life.



Clinics: Learning beyond the classroom

Learning to be an attorney goes beyond learning the law. At Widener Law, you may choose from an extensive list of skill-building clinics and externships where you can gain valuable experience in virtually every aspect of working in law, day to day.

Widener Law clinics at a glance

Delaware

- Pennsylvania Criminal Defense Clinic
- Delaware Civil Law Clinic
- Environmental Law and Natural Resources Clinic
- Pennsylvania Civil Law Clinic
- Veterans Affairs Clinic

Harrisburg

- Harrisburg Civil Law Clinic

Effective: In 2004, Pennsylvania signed into law the Domestic and Sexual Violence Victim Address Confidentiality Act, the product of 10 years of work on the part of Professor John Capowski and his Widener students (many now alumni), in cooperation with the Pennsylvania Coalition Against Domestic Violence.

Professor Thomas J. Reed and a Widener Law student counsel a client, one of the many experiences offered to students who participate in the Veterans Affairs Clinic.



“As an extern for Judge Jane Roth of the U.S. Court of Appeals for the Third Circuit, I’ve analyzed appellate arguments, learned federal litigation procedures, and developed an understanding of substantive case and statutory law. Best of all, I now have a judge as a mentor.”

Dana Vinograd, 3L, BA, Cornell University

Externships provide experience

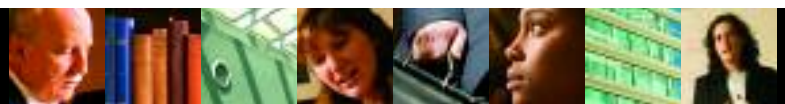
Second- and third-year externships provide you with opportunities to work with state and local prosecuting attorneys, public defenders, legal services lawyers, and government agencies. As a judicial extern, you get an inside look at the workings of the court system as you conduct legal research and draft documents for judges.

“My externship at the Office of Disciplinary Counsel helped me hone my research and writing skills, and I’ve learned practical legal skills from highly skilled attorneys,” says Louis Totino, 3L, BS, Marist College. “It’s been the highlight of my Widener Law experience.”



“There is so much that you can do with a law degree. The Harrisburg Civil Law Clinic gave me the opportunity to draft briefs, file motions, and engage with clients and opposing counsel. Widener Law has prepared me for the Bar and the profession.”

James K. Matelevich-Hoang, 3L, BA, California State University, Fresno



Professional training

In the public interest

According to the ABA, “Every lawyer has a professional responsibility to provide legal services to those unable to pay.” Widener Law’s well-developed public interest focus offers career-shaping experiences.

■ The *Public Interest Resource Center (Delaware)* cultivates pro bono volunteer opportunities for students in public interest agencies and government offices throughout Delaware, Pennsylvania, and New Jersey; offers counseling and guidance to students who seek careers in public interest law; and recognizes students and faculty for exceptional contributions to public service.

■ The *Public Interest Initiative (Harrisburg)* addresses children’s rights, investigates criminal defendant backgrounds, and provides tax law and low-income legal assistance.

“Some things you just can’t pick up by reading a book,” says John D. Cirrinicione, 2L, BS, Pennsylvania State University. “Clinical experience is the best education tool when it comes to the law.”

International programs

Go global with your legal education during one of Widener Law’s Summer International Law Institutes, which offer career-shaping experiences and immersion instruction in foreign countries around the world.

■ *Nairobi, Kenya* Drawing on the resources of the United Nations Environmental Programme, the Nairobi institute focuses on international environmental law.

■ *Geneva, Switzerland* Here is your chance to study law in the home city of the World Health Organization and the World Trade Organization.

■ *Sydney, Australia* Spend a summer studying comparative law in a program conducted in cooperation with the University of Technology, Sydney.

■ *Venice, Italy* Focused on European Union and business transactions law, the Venice program takes you to one of the world’s most beautiful cities.

Certificate programs

Certificate programs concentrate your studies in specific areas of the law to help you shape your degree to your needs and interests.

■ The *Law and Government Institute (Harrisburg)* offers certification in governmental law for students interested in government, politics, and legislative work.

■ The *Health Law Institute (Delaware)* consistently ranks among the nation’s top 10 such programs and prepares students for the fast-changing world of health law.

■ The *Institute of Delaware Corporate Law (Delaware)* offers a formal concentration in the corporate law of Delaware, one of the world’s foremost corporate legal environments.

■ The *Trial Advocacy Institute (Delaware)* offers trial skills courses that lead to certification and detailed litigation skills through advanced training and practice.



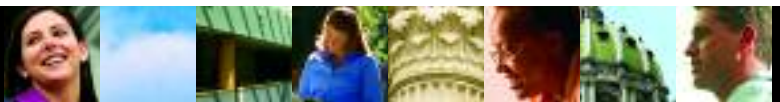
Global influence: A recent international law conference on democratizing the global system drew more than 150 participants and international experts from five continents to the Delaware Campus.

Distinctly better: The Legal Information Center is the premiere law library in the state of Delaware and is recognized as one of the major law libraries in the region.

Did you know: The Public Interest Law Alliance sponsors a silent auction each year to raise funds for public interest fellowships.

Fact: The Ruby R. Vale Interschool Corporate Moot Court Competition, held on the Delaware Campus, is the only competition of its kind in the nation.

Noteworthy: The Summer International Institute in Nairobi, Kenya, is the only summer legal institute in central Africa.



Resources and facilities

Access: the future

Access to information is the key to success in an interconnected world. The Widener Law Legal Information Center's 600,000-plus volumes on both campuses are made available to all students through broadband computer connections.

Legal and nonlegal computer databases, audio and videotapes, microfilm and microfiche collections, and high-speed computer access for legal research are also available.

Managed by a skilled staff trained to help you take full advantage of its vast resources, the Legal Information Center includes statutes and reporters for the 50 states, as well as federal statutes and reporters. The library also boasts an extensive collection of legal periodicals, looseleaf services, and treatises, and is continually expanding to stay abreast of new and developing areas of the law. The library is a selective depository for U.S. government documents.

In 2005, Widener Law opened the Technology Law Center to serve both campuses. This E-classroom offers technology courses and a two-day intensive course on aspects of legal technology.

All Widener Law students receive instruction in LEXIS and WESTLAW, and use of computer technology is integrated into virtually every aspect of a Widener Law student's life.

"Widener Law has prepared me for the paperless and wireless world of the law," says student Jennifer L Williams, 3L, BS, Peirce College.



Living at Widener Law

On the Delaware Campus, Concord Hall and Shipley Hall offer fully furnished and air-conditioned single-occupancy rooms. One- and two-bedroom apartments are also available on campus. The Barristers' Club and the Crown Court offer on-campus dining options.

Harrisburg Campus students choose from numerous nearby apartment complexes, many within walking distance of campus. The Side Bar Café offers meals and snacks. It is also a



Did you know: The Widener Law Loan Repayment Assistance Program is available to students who decide to pursue careers in public service.

Fact: Students who devote an exceptional amount of time to pro bono service receive special recognition upon graduation.

Fact: Professor Geoff Moulton returned to full-time teaching in 2005 after four years serving in the U.S. Department of Justice as First Assistant U.S. Attorney for the Eastern District of Pennsylvania.

Fact: At the Harrisburg Campus, close to 60 students have been awarded certificates from the Law and Government Institute since 2002.

By the numbers: Harrisburg Campus students extern with 29 state agencies, 13 counties, the Commonwealth, state supreme courts, state representatives and senators, the Maryland Office of Attorney General, and more.

Fact: Delaware Campus students participate in judicial externships with Delaware, Maryland, Pennsylvania, New Jersey, and federal judges and justices.

convenient campus meeting place. Some students prefer the urban lifestyle in downtown Harrisburg, near Capitol Center and a short drive from campus.

For students with disabilities

In accordance with Section 504 of the Rehabilitation Act of 1973 and the Americans with Disabilities Act, Widener Law provides support services for students with a wide range of disabilities. We are committed to ensuring accessibility for all students.



Activities

Find your path

Widener Law helps you find your way in the world of law. Career development focuses not only on job search strategies, but also on gaining lifelong skills for personal success.

“Most students focus on joining a big law firm, and with a degree from Widener Law, you can do many things,” according to alumna Tara L. Smith, ’05, legal council to the Pennsylvania Democratic Caucus. “Widener Law prepares you to find your own path.”

Student activities

Extracurricular and cocurricular activities available on both campuses personalize your Widener Law learning experience. In addition, you can become involved in public service legal activities. Through more than 60 student-run organizations, Widener Law students discover their passion and get involved.

The Moot Court and Trial Advocacy Honor Societies are open to exceptional students. These organizations provide opportunities to hone advocacy skills in interscholastic competition around the country.

Law review

Widener Law students can develop legal research, writing, and editing skills through participation in several law reviews and journals.

The Delaware Journal of Corporate Law (Delaware) In operation for more than 30 years, this nationally ranked journal enjoys a reputation for excellence in the global corporate legal community.

The Widener Law Review (Delaware) Dedicated to exploring a different timely area of law every year, each issue is based on a symposium held on the Delaware Campus.

Widener Law Journal (Harrisburg) The *Journal* provides a vast forum for legal scholarship in all areas of the law. The *Journal* also publishes the *Annual Survey of Pennsylvania Administrative Law*, the only law review focused on administrative law in Pennsylvania.





“Widener Law opened doors for me. Whether it is the Career Development Office, guest speakers, student associations, or faculty, avenues exist at Widener Law that allow students to spend time not just on the books, but figuring out how they will apply that knowledge to become successful in their fields.”

Brian Jordan, 2L, BA, Pennsylvania State University

“I’ve had an extremely successful two years at Widener Law. The faculty really prepares you for the real world, and everyone here invests a tremendous amount of energy making the school successful. The opportunities I’ve found at Widener Law far surpass anything I expected when I started law school.”

Laura Jennings, 2L, BA, George Washington University



Noteworthy: Students demonstrating academic prowess and a desire to serve as trial advocates upon graduation can be part of the Trial Advocacy Honor Societies on both campuses.

Distinctly better: Widener Law student Vicki Goodman, 3L, BS, Millersville University, served as the national chair of the American Bar Association Law Student Division, representing approximately 50,000 law students across the nation.

Fact: Every Widener Law Career Development counselor has a JD. Collectively, the counseling staff has more than 50 years of practical legal experience.



Career development

Career success, one person at a time

Career development at Widener Law focuses on student success for the long haul. “We call it ‘career development,’ not ‘job placement,’ for a reason,” says LeaNora Ruffin, assistant dean for career development. “We aim to instill skills that last a professional lifetime.”

From self-assessment to salary negotiation, your Widener Law counselor is there through all phases of your job search. Having good contacts helps, too. “As a relatively young school of law, we can offer the advantage of having many active alumni who are eager to stay involved by mentoring our students and hiring our graduates,” says Karen Durkin, director of career development.

Campus recruiting, workshops, and seminars

Recruiting programs regularly bring employers to campus; workshops and networking sessions offer additional perspectives on the world of the law. Seminars in obtaining federal and state judicial clerkships are particularly successful; a higher percentage of Widener Law students hold such positions than the national average for law students.

Mentors make a difference

Through a unique alumni mentoring program, more than 800 Widener Law graduates have mentored students since 1999.





A partial list of recent employers

Akin Gump Strauss Hauer & Feld, LLP

Archer & Greiner, PC

Ballard Spahr Andrews & Ingersoll, LLP

Barley Snyder Senft & Cohen, LLC

Barros McNamara Malkiewicz & Taylor, PA

The Bayard Firm

Blank Rome, LLP

Brown & Connery, LLP

Buchanan Ingersoll & Rooney, PC

Cozen O'Connor

Dechert, LLP

The Delaware Court of Chancery

The Delaware Supreme Court

Dewey Ballantine, LLP

Drinker Biddle & Reath, LLP

Duane Morris, LLP

Fulbright & Jaworski, LLP

Greenberg Traurig, LLP

Kaye Scholer, LLP

Kirkpatrick & Lockhart
Nicholson Graham, LLP

Marshall Dennehey Warner
Coleman & Goggin

McCarter & English

McNees Wallace & Nurick, LLP

Morgan Lewis & Bockius, LLP

Morris James Hitchens &
Williams, LLP

Morris Nichols Arsht &
Tunnell, LLP

Morrison & Foerster, LLP

The New Jersey
Superior Court

The New Jersey
Supreme Court

The Pennsylvania
Supreme Court

Pepper Hamilton, LLP

Pfizer

Philadelphia District
Attorney's Office

Potter Anderson &
Corroon, LLP

Rawle & Henderson, LLP

Reed Smith, LLP

Rhoads & Sinon, LLP

Richards Layton & Finger, PA

Saul Ewing, LLP

Skadden Arps Slate Meagher
& Flom, LLP

The U.S. Court of Appeals,
Third Circuit

White & Williams, LLP

Wolf Block Schorr and
Solis-Cohen, LLP

Woodcock Washburn, LLP

York County District
Attorney's Office

Young Conaway Stargatt
& Taylor, LLP

Fact: There are more than 30 Widener Law graduates working in the Philadelphia District Attorney's Office.

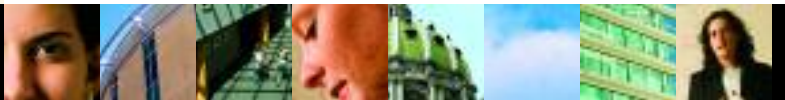
Fact: Among Widener Law alumni, there are 101 judges and more than 700 CEOs, CFOs, and corporate board members.

Did you know: For the past five years, we have posted an average of 900 jobs in our online job bank.

Fact: Recent Widener Law graduates are employed across the country in states as far away as California and Arizona.

Distinctly better: Widener Law graduates comprise one-third of the Delaware State Bar.

Noteworthy: Widener Law consistently exceeds the national average for placement of judicial law clerks.



Two great campuses, two great cities

The Harrisburg Campus is minutes from the Capitol Complex, where the Pennsylvania legislature, state and federal courts, and governmental agencies provide a backdrop to focused and rewarding learning, externship, and employment opportunities. Philadelphia and Washington, DC, each about 100 miles away, add professional and cultural richness to the area.



Harrisburg campus

Campus character: Tight-knit and personal, experiential, a top choice for government and political law, strong tradition of public interest law

Harrisburg: Pennsylvania state capital

Population: 48,950 (metropolitan area 643,820); fourth largest metropolitan area in Pennsylvania

Corporate headquarters: Rite Aid Corp., Tyco Inc., Hershey Foods, and Harley Davidson

Susquehanna River: Longest river on the American East Coast, flows through Harrisburg

Great outdoors: The Appalachian Trail passes just a few miles west of town.

National heritage: Gettysburg National Military Park is less than 40 miles away.

Spectator sports: Major league indoor soccer, minor league baseball, hockey, outdoor soccer, semi-professional basketball and football

Culture: Harrisburg Symphony Orchestra, National Civil War Museum, Pennsylvania State Farm Show Arena, Pennsylvania State Capitol Complex, State Museum of Pennsylvania, Strawberry Square retail area

Transportation: Connected to Baltimore and Washington, DC, via I-83; Philadelphia via I-76; Harrisburg International Airport (MDT) is nearby.

Overheard: "The Harrisburg Campus is close to downtown for easy access, but far enough away that you feel like you are on an actual campus." Tara Mondelli, 2L, BA, Gettysburg College.



Delaware campus

Campus character: Among the finest programs nationally in health law; outstanding corporate, environmental, and public interest programs; heart of a vibrant legal community

Wilmington: Most important and accessible city in Delaware

Population: 71,988 (metropolitan area 500,000)

Corporate headquarters: Bank of America, DuPont, AstraZeneca, Chase Card Services, ING Direct, American Life Insurance Company, Blue Cross and Blue Shield of Delaware, and state headquarters of numerous major banks

Great outdoors: Atlantic Ocean beaches less than two hours away; two state parks within minutes of campus; Chesapeake Bay within 45 minutes

National heritage: Philadelphia, site of the signing of the Declaration of Independence in 1776 and fifth largest city in the U.S., is 25 miles away.

Culture: Brandywine Park and Zoo, Delaware Art Museum, Delaware Center for Contemporary Art, Delaware Museum of Natural History, Grand Opera House, Longwood Gardens, Winterthur Museum; Puerto Rican, Polish, Italian, and Greek festivals held every spring and summer

Transportation: I-95 runs directly through Wilmington. Wilmington Rail Station serves New York, as does Amtrak, which also serves the entire East Coast. Reach Philadelphia on the SEPTA Regional (commuter) Rail. Nearby Philadelphia International Airport (PHL) connects Wilmington to the world.



The Delaware Campus of Widener Law is the only school of law in Delaware, an international center of corporate law. In the city of Wilmington you will live in the heart of a thriving legal environment.

Overheard: "Wilmington is neat. For those with an interest in corporate law, it's perfect." Laura Jennings, 2L, BA, George Washington University.



Applying

Apply to Widener Law

If you think Widener Law is the kind of place where you can thrive, you are ready to apply. The following is a brief overview of the application process, policies, and other information you will want to know about attending Widener Law.

Applying online is now free. Go to www.law.widener.edu/admissions for details.

Admission policy

The Admissions Committee reviews all applications. Decisions to admit take into consideration the applicant's undergraduate grade point average (UGPA) and Law School Admission Test (LSAT) score, work and life experiences, extracurricular activities, community involvement, and graduate study. Widener Law is committed to diversity and encourages women and members of minority groups to apply.

Full- and part-time programs

Widener Law operates two divisions on each campus. The Regular Division enrolls full-time students who expect to finish their degree in three years. The Extended Division offers part-time day and evening programs and is typically completed in four years.

Choose your campus

You may apply to either or both campuses by submitting one application. If you apply to both campuses, please be prepared to accept admission at the campus we designate.

In partnership with the Pennsylvania State System of Higher Education (PASSHE)

Students attending any of the 14 PASSHE universities enjoy simplified enrollment at the Harrisburg Campus. The agreement offers a number of programs to fit different goals and schedules.

Trial Admissions Program (TAP)

Designed especially for students who excel in only one of the two principal standardized measures of success—the UGPA or LSAT score—TAP is held during the summer as an opportunity for participants to demonstrate their ability to succeed in legal studies. While classes do not count toward a degree, they can lead to admission. Applicants who do not meet regular admissions standards are automatically considered for TAP.

Transfer students

Applicants submit a certified transcript, class rank, and letter of good standing from the dean of their previous law school. Admitted in any semester, they can transfer up to 35 credit hours for work completed with a grade C, its equivalent, or higher.

Visiting students

Visiting, or transient, applicants submit a certified transcript, a letter of good standing, and a letter of permission from their law school for admission in any semester as nonmatriculating students.

Previous law school attendees

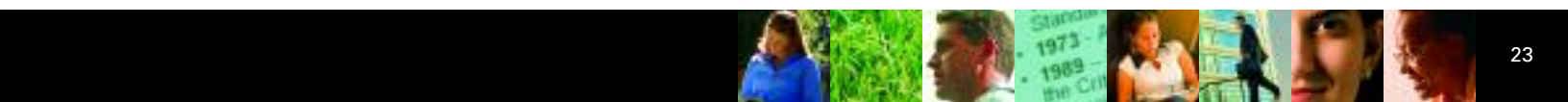
Applicants who have attended any law school prior to making application to Widener Law must submit a certified transcript and letter of good standing from that law school.



Delaware Campus: With an extensive law library, wireless Internet access, and modern classrooms with laptop plug-ins and display technology, Widener Law's 40-acre Delaware campus offers an ideal learning environment.



Harrisburg Campus: Students get the best of both worlds—the personal attention of a small school and the career-defining opportunities represented by Harrisburg's many governmental agencies and area judges.



Application instructions and information

The attached application form must be completed in full and signed by the applicant. It should be mailed to:

*Office of Admissions
Widener University
School of Law
4601 Concord Pike
P.O. Box 7474
Wilmington, DE 19803-0474*

Alternatively, applicants may obtain application materials, complete their application, and submit all necessary information online at www.law.widener.edu.

Applicants may also apply through the Law School Admission Council (LSAC) electronic application process online at www.lsac.org.

Widener Law operates two fully integrated campuses—one in Wilmington, Delaware, and one in Harrisburg, Pennsylvania. Applicants may apply to either or both campuses by submitting one application. However, applicants applying to both campuses should be prepared to accept admission at the campus designated by the Law School. Applicants applying to both campuses have waived their choice of campus.

The deadline for application to Widener Law is May 15.

LSAT

The LSAT, required testing for applicants, is administered throughout the country in June, October, December, and February. Specific information regarding the LSAT process can be obtained from your undergraduate school's placement office or by contacting:

*Law Services
P.O. Box 2000
Newtown, PA 18940-0998
215-968-1001
www.lsac.org*

Letters of recommendation

Letters of recommendation are suggested but not required for admission. A maximum of three letters will be reviewed. The most helpful letters are written by individuals such as former professors and employers or associates who have specific knowledge of the intellectual abilities and character of the applicant. It is strongly recommended that your letters be submitted through the LSAC letter of recommendation service. Please contact Law Services for additional instructions.

Transcripts

Admission to Widener Law is subject to successful completion of the baccalaureate degree. An official final transcript showing receipt of the degree is required of all accepted applicants and must be sent from the degree-granting institution and received by the Admissions Office prior to matriculation.

Application checklist

- Obtain LSAT and Law School Data Assembly Service (LSDAS) registration and information from Law Services.
- Take the LSAT and register with the LSDAS.
- Complete, sign, and mail to the Admissions Office the attached application form with the nonrefundable \$60 application fee.* If you are applying to both campuses, only one application fee is required. Or, fill out the application online.
- Have all undergraduate, graduate, and professional schools attended transmit official transcripts of applicant's records to LSDAS.
- Submit all letters of recommendation to LSDAS.
- JD/PsyD applicants must submit additional application materials. The deadline for JD/PsyD application is February 1. To receive a complete application packet, contact:

*Law-Psychology Program
Institute for Graduate
Clinical Psychology
Widener University
One University Place
Chester, PA 19013-5792
610-499-1206*

- JD/MBA applicants must also apply to the School of Business Administration. To receive an application packet, contact:

*Graduate Programs
in Business
Widener University School
of Business Administration
One University Place
Chester, PA 19013-5792
610-499-4305 or 302-478-3400*
- Foreign applicants seeking admission to the Juris Doctor program must submit a complete application by April 1. Applicants educated in a foreign country are required to submit all foreign transcripts through the LSAC JD Credential Assembly Service (JD CAS). A Foreign Credential Evaluation will be completed by the American Association of College Registrars and Admissions Officers and incorporated into your LSDAS Report. If it is determined that you need to submit a TOEFL score, you must contact Educational Testing Service (ETS) and request that your TOEFL score be sent to LSAC. LSAC's TOEFL code for JD CAS is 0058. The TOEFL score will be included in your LSDAS Report. Questions about JD CAS can be directed to LSAC at 215-968-1001.

Financial aid information

Following acceptance by the Admissions Committee, each applicant automatically receives detailed instructions and forms required to apply for financial assistance. All financial aid applicants must file a Free Application for Federal Student Aid (FAFSA). Other required information includes the Institutional Data Form and a copy of the student's most recent federal income tax return. Financial aid for entering students is awarded on a rolling basis.

Each applicant is evaluated for aid only after all required forms have been received and the applicant has been formally admitted to Widener Law.

Admission fees

The following nonrefundable admission fees are required at designated times during the application and admission process. Fees must be paid at the time they are due. Failure to do so will jeopardize an applicant's admission status and may result in the forfeiture of Widener Law's offer of admission.

Application fee* \$60
(must accompany form)

**Application fee waived if you apply on or before December 31 or if you apply online.*

Deposit** \$400
(credited toward tuition)

***Deposit is due May 1. Applicants offered admission after April 15 will be notified of deposit dates.*

Widener Law tuition and fees, along with return of Title IV funds policy, can be viewed on the Web at www.law.widener.edu under Financial Aid and Bursar's Office. A more detailed description of the federal Title IV refund policy and our institutional refund policy can be obtained from the Bursar's Office at 302-477-2209 or 717-541-3957.

Scholarships, awards, and honors

Widener Law provides scholarships, prizes, and awards to students whose academic excellence and high achievement prior to and during law school matriculation merit special recognition.

Widener Scholars Program and academic achievement awards

The Widener Scholars Program provides tuition scholarships for entering students whose credentials rank them in the top of the law school's applicants. These scholarships are awarded at or soon after admission and are continued for the entire law school career if the recipient achieves acceptable grades.

To recognize outstanding achievement for the first year of study, the Widener Scholars Program awards several major scholarships to returning students. Awards are made in the summer after the first academic year. The scholarships are applied to the student's second-year tuition and fees and may be continued for subsequent years if acceptable academic performance is maintained.



Dixon Scholarships

The Harrisburg Campus of Widener Law and the Pennsylvania State System of Higher Education (PASSHE) have a partnership agreement simplifying enrollment at the Harrisburg Campus for students at any of the 14 PASSHE universities. The partnership includes a 3+3 Early Admit Joint Degree Program and an Express Admit Program and makes up to 56 scholarships available to eligible students each year. Dixon Scholarships provide 30 percent of yearly tuition and fees for the Harrisburg Campus and are continued for the entire School of Law career if the recipient achieves acceptable grades.

Overheard: "Applying was painless," says Troy Riddle, 2L, BA, Cleary College. "I love the idea of an online process. It saved me time and money ... that is always a plus!"

Colleges & universities represented in the student body

Albion College	Flagler College	Moravian College	University of Central Oklahoma
Albright College	Florida State University	Mount St. Mary's University	University of Colorado
Alvernia College	Fordham University	Muhlenberg College	University of Delaware
American University	Franklin & Marshall College	Nazareth College of Rochester	University of Evansville
Arcadia University	George Mason University	Neumann College	University of Florida
Arizona State University	George Washington University	New York University	University of Hartford
Bloomsburg University of Pennsylvania	Georgetown University	North Carolina State University	University of Kentucky
Boston College	Georgia State University	Northeastern University	University of Louisville
Boston University	Georgian Court College	Ohio Dominican University	University of Maryland
Bowling Green State University	Gettysburg College	Ohio State University	University of Massachusetts
Brigham Young University	Grove City College	Oral Roberts University	University of Miami
Bucknell University	Gwynedd-Mercy College	Pace University	University of New Haven
Cabrini College	Hamilton College	Pennsylvania State University	University of North Carolina
California State University, Northridge	Hampshire College	Pensacola Christian College	University of Pennsylvania
Carnegie Mellon University	High Point University	Philadelphia University	University of Phoenix
Catholic University of America	Holy Family College	Portland State University	University of Pittsburgh
Cedar Crest College	Houghton College	Randolph-Macon Woman's College	University of Rhode Island
Central Pennsylvania College	Immaculata College	Rensselaer Polytechnic Institute	University of Richmond
Chatham College	Indiana University at Bloomington	Richard Stockton College of New Jersey	University of Scranton
City University of New York	Indiana University of Pennsylvania	Rowan University	University of South Alabama
Clarion University of Pennsylvania	Ithaca College	Rutgers University	University of Tampa
Clemson University	James Madison University	Saint Charles Borromeo Seminary	University of Tennessee
College Misericordia	Juniata College	Saint Francis College	University of the Sciences
College of New Jersey	Kalamazoo College	Saint John's College	University of Virginia
College of Notre Dame	Kent State University	Saint Joseph's University	University of West Indies
College of William & Mary	Kenyon College	Saint Lawrence University	University of Wisconsin
College of Wooster	Kings College	Saint Mary's College	Ursinus College
Concord College	Kutztown University of Pennsylvania	Salisbury State University	Villanova University
Connecticut College	Lafayette College	San Francisco State University	Virginia Commonwealth University
DeSales University	LaSalle University	Seton Hall University	Virginia Military Institute
Dickinson College	Lebanon Valley College	Shepherd College	Virginia Polytechnic Institute
Drew University	Lehigh University	Shippensburg University of Pennsylvania	Virginia Union University
Drexel University	Lincoln University	State University of New York	Wagner College
Duke University	Lock Haven University of Pennsylvania	Stephen F. Austin State University	Wake Forest University
Duquesne University	Loyola College	Stephens University	Washington & Jefferson College
East Tennessee State University	Madonna University	Susquehanna University	Washington College
Eastern College	Mansfield University of Pennsylvania	Swarthmore College	Wellesley College
Eastern Washington University	Marist College	Syracuse University	West Chester University of Pennsylvania
Edinboro University of Pennsylvania	Mercy College	Temple University	West Virginia University
Elizabethtown College	Messiah College	Thomas Jefferson University	Western Kentucky University
Elon College	Miami University	Towson State University	Western Maryland College
Emory University	Michigan State University	Trinity College	Widener University
Eugene Lang College	Millersville University of Pennsylvania	Troy State University	William Patterson University of New Jersey
	Minnesota State University	Tulane University	Wilmington College
	Montclair State University	U.S. Merchant Marine Academy	Worcester Polytechnic Institute
	Monmouth University		York College
			York College of Pennsylvania

Widener Law Application for Admission

Please consider this application for admission to:

- Delaware Campus
 Harrisburg Campus
 Delaware & Harrisburg Campuses
- Regular Division (Full-Time, Day)
 First-Year Student
 JD/PsyD Program
- Extended Division (Part-Time, Evening)
 Transfer Student
 JD/MBA Program
- Extended Division (Part-Time, Day)
 Visiting (Transient) Student

Please Type or Print Clearly

Name: Last, First, Middle		Social Security #	
Permanent Address		LSAC Account #	
City, State, Zip Code		E-mail Address	
Local or Business Address		Area Code, Telephone	
City, State, Zip Code		Area Code, Telephone	
State of Legal Residence		Place of Birth: City, State	
Are you a U.S. Citizen? <input type="checkbox"/> Yes <input type="checkbox"/> No		Are you a Resident Alien? <input type="checkbox"/> Yes <input type="checkbox"/> No <i>If yes, provide Resident Alien number.</i>	
Father's Name		Occupation	
Mother's Name		Occupation	
Sex and race information: You need not answer these questions, and failure to answer them will not affect consideration of your application. The Widener University School of Law uses this information for statistical purposes only.			
Sex: <input type="checkbox"/> M <input type="checkbox"/> F	Are you a member of a minority group? <input type="checkbox"/> Yes <input type="checkbox"/> No		If yes, what group?

Academic Information (All questions must be answered. Applications with incomplete information will be returned.)

High School Education				
School	From - To	Curriculum	Graduated	
Collegiate, Graduate, and Professional Education				
School	From - To	G.P.A.	Major	Degree
Legal Education		Have you ever attended any law school?*		
		<input type="checkbox"/> Yes <input type="checkbox"/> No		If yes, name of school(s)
Have you applied to Widener University School of Law in any prior years? <input type="checkbox"/> Yes <input type="checkbox"/> No			If yes, which years?	
Have you ever attended a conditional admittance or enrichment program at any law school? <input type="checkbox"/> Yes <input type="checkbox"/> No			If yes, please explain on a separate sheet of paper.	

*Please explain reason for leaving on a separate sheet and have an official transcript sent directly to Office of Admissions, Widener Law.

Please list those law schools to which you have applied for admission or intend to apply.	
Please list each LSAT you have taken, giving date and score.	
Please indicate if you are registered to take another LSAT and give the test date. <input type="checkbox"/> Yes <input type="checkbox"/> No	If yes, date

Work History

State your last three full-time employment positions, including summer employment.

Dates	Employer	Position	Reason for leaving
Dates	Employer	Position	Reason for leaving
Dates	Employer	Position	Reason for leaving

While an undergraduate, were you employed during the academic year? Yes No

If yes, indicate position(s) held	Hours per week	Freshman	Sophomore	Junior	Senior
-----------------------------------	----------------	----------	-----------	--------	--------

If you have served in a branch of the Armed Forces of the United States, please select branch and provide dates of service.
 Air Force Marines Army National Guard Coast Guard Navy

Dates of Service:

Character and Fitness

Each applicant must answer all questions. If you answer “yes” to any question, please provide a detailed statement explaining your answer. Note: If information on your application changes, please submit an amendment in writing to the Admissions Office.

Have you ever:

1. received an academic warning, been placed on probation, disciplined, suspended, or dismissed by any learning institution or licensing board for any reason?	<input type="checkbox"/> Yes <input type="checkbox"/> No
2. been court-martialed?	<input type="checkbox"/> Yes <input type="checkbox"/> No
3. been arrested, given a written warning, taken into custody or accused, formally or informally, of the violation of a law for any offense other than a minor traffic violation? If currently on probation or parole, please provide all terms and conditions. (You must include any instance of driving under the influence and offenses that have been expunged or occurred while a juvenile, including disorderly persons’ offenses.)	<input type="checkbox"/> Yes <input type="checkbox"/> No

Personal Statement

We invite you to submit a short personal statement highlighting any of your recent personal or academic achievements. Additionally, in evaluating your LSAT score and academic performance, and in fulfilling our commitment to diversity, we may consider relevant such factors as a history of economic or educational disadvantage, cultural or language differences, disability, and whether you believe your admission would help to correct underrepresentation of a particular minority or disadvantaged group in the legal profession. Please attach a brief statement if you would like us to consider these or any other factors in the evaluation of your application.

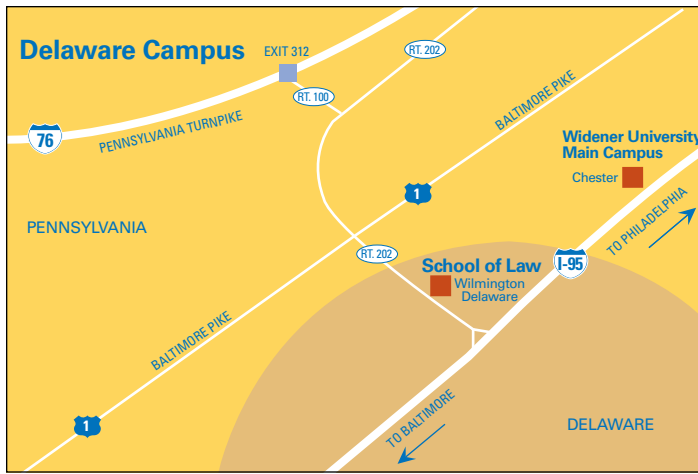
Please complete the following inquiry. I first learned about the School of Law from:

<input type="checkbox"/> ABA-LSAC Official Guide to ABA-Approved Law Schools	<input type="checkbox"/> A School of Law representative at _____
<input type="checkbox"/> A currently enrolled law student (name)	<input type="checkbox"/> An unsolicited law school mailing
<input type="checkbox"/> A pre-law adviser at (school)	<input type="checkbox"/> A Widener University law graduate (name)
<input type="checkbox"/> The Internet	<input type="checkbox"/> Other (please specify)

NOTE: Any false or misleading statement, incomplete or inaccurate information, omissions of required information, or failure to update changes in information in this application may cause you to be denied admission; or, if admitted, to be dismissed from the School of Law or cause your degree to be revoked by the dean, and may jeopardize licensure with Boards of Bar Examiners.

I certify that the information I have provided on this application and on any attached materials is true and complete.

Signature	Date
-----------	------



Which campus?

Different states, different programs, different paths—how do you choose which campus is right for you? The best way to find out is to schedule visits to both campuses, located about 90 minutes apart. Ask questions, get a feel for Widener Law’s programs and people, and imagine what it would be like to live in each location. We are eager to show you around. When you come, we will give you a personal tour.

Go to school where you intend to practice. The career opportunities for attorneys in Harrisburg and Wilmington are some of the best in the country.—Lee Solomon, New Jersey Superior Court Judge, '78, JD

To Delaware Campus

From Philadelphia and Points North:

Take I-95 South to Exit 8 (Route 202 North/Concord Pike). ★Thereafter follow directions marked with single star.

From Baltimore and Points South:

Take I-95 North to Exit 8 (Route 202 North/Concord Pike). ★Thereafter follow directions marked with single star.

From Pennsylvania Turnpike (Route 76):

Take Exit 23 (Downingtown) off the turnpike and follow Route 100 South to Route 202 (approximately 15 minutes). Travel south on Route 202 into Delaware. The Delaware Campus is two miles past the state line, on the left side of Route 202.

From New Jersey:

Take New Jersey Turnpike, I-295 South, or Route 40 West to Delaware Memorial Bridge. Take I-95 North to Exit 8 (Route 202 North/Concord Pike). ★Thereafter follow directions marked with single star.

To Harrisburg Campus

From Western Pennsylvania and Ohio:

Take Pennsylvania Turnpike East to Exit 226 (Carlisle—old Exit 16). Take Route 11 North to I-81 North. Take I-81 North to Exit 69 (Progress Avenue). ★★Thereafter follow directions marked with two stars.

From Northeastern Pennsylvania and Central Upstate New York:

Take I-81 south to Exit 69 (Progress Avenue). ★★Thereafter follow directions marked with two stars.

From Northwestern Pennsylvania and Western Upstate New York:

Take I-80 East to Exit 123 (Route 970—old Exit 20). Take Route 970 South to Route 322 East. Take Route 322 East to Route 22-Route 322 East; follow to I-81 interchange. Take I-81 North to Exit 69 (Progress Avenue). ★★Thereafter follow directions marked with two stars.

From Massachusetts, Connecticut, and Eastern Upstate New York:

Take I-84 West to junction with I-81. Take I-81 South to Exit 69 (Progress Avenue).** ★★Thereafter follow directions marked with two stars.

From Northern New Jersey:

Take I-80 West to junction with I-81. Take I-81 South to Exit 69 (Progress Avenue). ★★Thereafter follow directions marked with two stars.

From Metropolitan Philadelphia, Southern Central New Jersey, and Delaware:

Take Pennsylvania Turnpike West to Exit 247 (Harrisburg East—old Exit 19). Take I-283 North to I-83 North-Route 322. Take I-83 North-Route 322 to junction with I-81. Merge immediately into right lane. Follow I-81 South to Exit 69 (Progress Avenue—exit on right). ★★Thereafter follow directions marked with two stars.

From Eastern Maryland and Washington, DC:

Take I-83 North to I-83 North-Route 322 to junction with I-81. Follow I-81 South to Exit 69 (Progress Avenue). ★★Thereafter follow directions marked with two stars.

★The Delaware Campus is five miles north of the exit on the right side of Route 202 (Concord Pike).

★★At bottom of exit ramp, turn left. Travel north on Progress Avenue to Thea Drive, where there is a Widener University sign. Turn right onto Thea Drive and left at the next intersection onto Vartan Way. Parking is on the left.

lawadmissions@mail.widener.edu

www.law.widener.edu

1-888-WIDENER



Widener University School of Law

Delaware Campus

4601 Concord Pike
P.O. Box 7474
Wilmington, DE 19803-0474

302-477-2162

Harrisburg Campus

3800 Vartan Way
P.O. Box 69381
Harrisburg, PA 17106-9381

717-541-3903